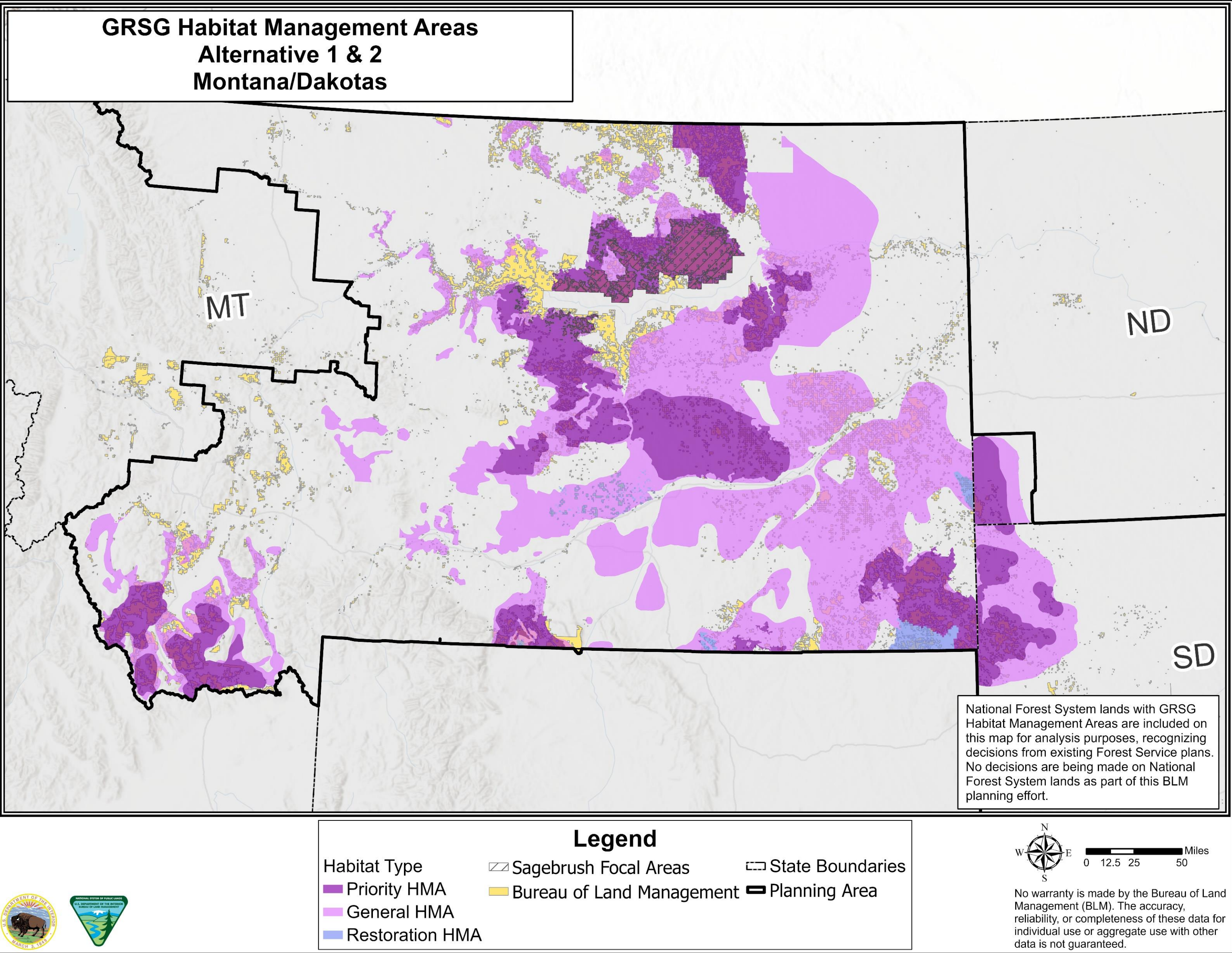


# Montana/Dakotas BLM: State Specific Circumstances

While Montana has relatively large, robust GRSG populations, North and South Dakota have small, peripheral populations. Therefore, the BLM is considering how to meet the overall goals for GRSG, while tailoring management to address habitat challenges at a local level.



HMA Type	Alts 1 & 2 BLM Acres (Total)	Alt 3 BLM Acres (Total)	Alts 4-6 BLM Acres (Total)
PHMA	3.28m (10.7m)	5.3m (27.9m)	3.3m (11.2m)
SFA	980k	-	-
ACEC	-	726k	726k*
GHMA	2.4m (19.7m)	-	1.9m (16.6m)
RHMA	165k (444k)	-	94k (187k)
CHMA	-	298k (770k)	298k (770k)

\*ACECs apply to Alternatives 3 and 6 only

